

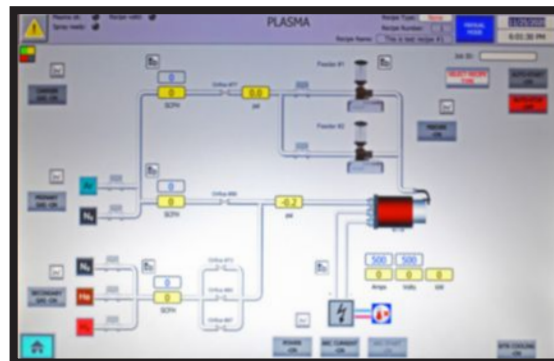
# PlasQuest 2000



20" Wide x 24" High x 8" Deep

## HIGHEST END

Closed Loop  
Thermal Spray  
Plasma System



Electronic Pressure  
Regulators create  
**Precise Gas Flow**  
Through Critical Orifices

Electronic Regulators are accurate  
and repeatable, providing coating  
quality time after time

## PlasQuest 2000 Gas Panel



20" Wide x 24" High x 8" Deep

## Siemens PLC with Analog and Digital Control

### Siemens HMI Touch Screen

Displays the gas flow lines shown on screen

- ☐ Active vs. Non-active
- ☐ Active flow lines, turn green as they become energized
- ☐ Non-active flow lines are greyed until activated

### Display Shows

- ☐ Set points
- ☐ Actual values
- ☐ Recipe of choice
- ☐ Recipe name
- ☐ Recipe type
  - ☐ Bond or top coat

### Job Number

**Recipes:** Amps, volts, primary, secondary, carrier, powder feedrate #1 or #2

- ☐ Save ☐ Load
- ☐ Store ☐ Run
- ☐ Recall

### Prevents Mistaken Parameter Settings

- ☐ Choice of locked or unlocked

### Job Method

- ☐ Gun of choice
- ☐ Gun hardware build

### Alarms

Recipe loaded by Coating Engineer  
Alarms of caution and critical are variable

- ☐ Red alarms are loaded into the recipe
  - ☐ Shut down! System software protects coating quality
  - ☐ Display Red Alarm at top of active screen
  - ☐ Saved in Alarm Page for operator and maintenance
- ☐ Amber alarms are loaded into the recipe
  - ☐ Display Amber Alarm at the top of active screen
  - ☐ Saved in Alarm Page for operator and maintenance

### Choice of Desired Flow Readings

- ☐ PSI
- ☐ SCFH
- ☐ NLPM
- ☐ SLPM

### Gas Flow Perfection without Mass Flow Controller Drift

### Critical Orifice Technology with Precise Electronic Pressure Regulators

- ☐ Proven pressure stability
- ☐ Repeatable technology since 2012
- ☐ Verified, repeatable gas flow control
- ☐ Elimination of gas flow control drift

### Primary Gas Choices:

- ☐ Argon
- ☐ Nitrogen
- ☐ #56 Orifice provides PSI / SCFH / SLPM / NLPM flow choices

### Secondary Gas Choices

- ☐ Helium
- ☐ Hydrogen
- ☐ Nitrogen
- ☐ 3 Orifices #80, #73, #97 provides PSI / SCFH / SLPM / NLPM flow choice

### 1 Carrier Gas Control with Choice of 1 or 2 Powder Feeders

- ☐ #77 Orifice provides SCFH / SLPM / NLPM flow choices

### Interface to Robot [Option]

- ☐ Developed to robot specific

### Choose Data Logging [Option]

- ☐ Choice to data capture time periods
- ☐ Job number entry

### Laser Drilled Critical Orifices Through Diamonds and Rubies

- ☐ Accurate orifice sizing
- ☐ Orifice hole never wears open
- ☐ Pressure to the orifice input, creates the perfect flow through the orifice
- ☐ Expected flow never varies, never drifts

# Electronic Pressure Regulators to Critical Orifices



Proven History  
9+ years



High end quality



No drift



Repeatable



Dependable gas  
flow rates



Performance



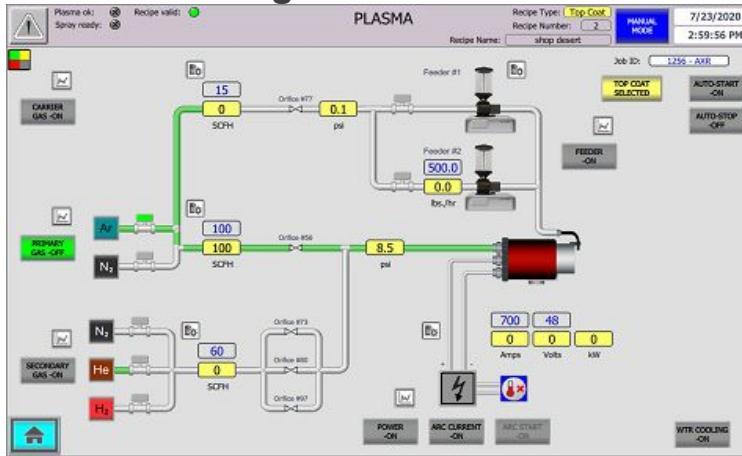
Less costs



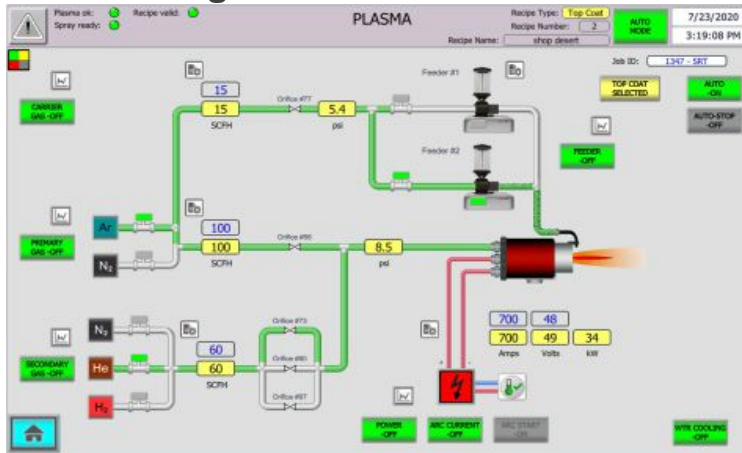
Happy, satisfied  
customers



## Arc Gas Flowing



## Gun Running With Powder



## Explosion Panel



## H2 Sensor



## Inside Gas Panel



## H2 Controller



## Inside PlasQuest 2000



## Gas Panel

